

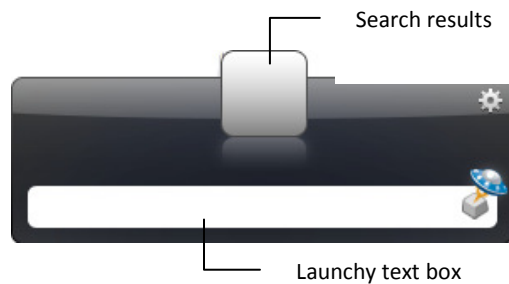
What is Launchy?

Launchy is an open-source Windows utility that allows you to index and launch applications on your computer. Gone are the days of searching through obscure files and folders just to locate a single application. With Launchy, your programs are available within several keystrokes! Simply type the name of the application that you are looking for and double-click to launch it.

By default, Launchy indexes the applications on your *Start* menu, but can also be configured to launch other applications. To use this program, all you will need is a Windows-compatible PC.

Accessing Launchy

Launchy runs in the background until you bring it to the foreground. To do this, press **ALT + SPACEBAR**. The *Launchy* window appears:



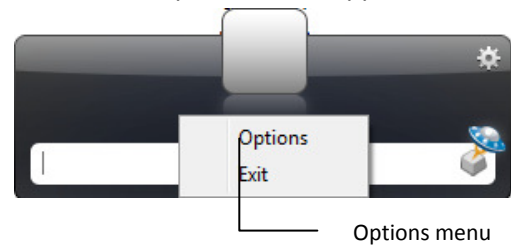
Launching Programs

1. In the *Launchy* text box, type the name of the application that you are looking for. Launchy will generate a list of results that match your entry.
2. Select the application from this list and double-click. Your selection will launch.

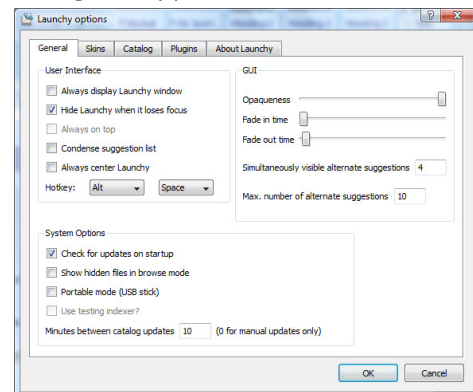
Adding Directories

If you want to add other directories to the index, do the following:

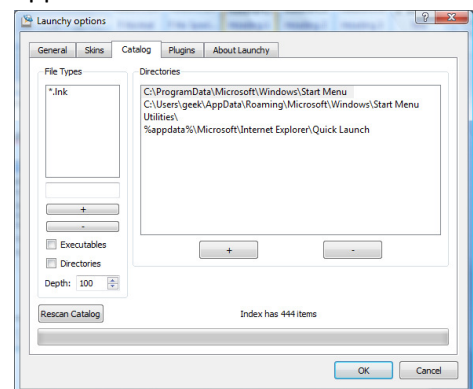
1. Open Launchy. See *Launching Programs*.
2. Remain on the Launchy window and right-click anywhere outside of the textbox. An *Options* menu appears:

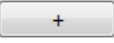


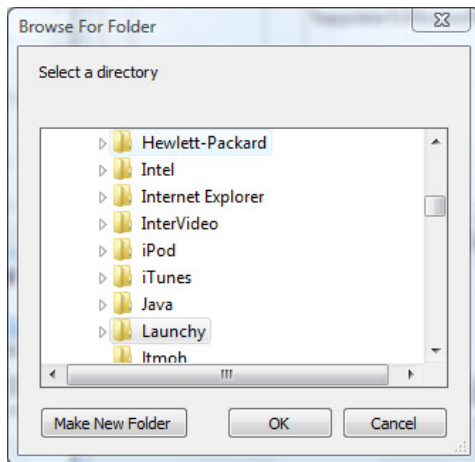
3. Click **Options**. The *Launchy options* dialog box appears:



4. Click the **Catalog** tab. The *Catalog* tab appears:

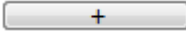


5. Under the *Directories* list, press the  button. The *Browse for folder* dialog box appears:




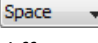
6. Under *Select a directory*, select the folder that you want to add and click **OK**.
7. The selected directory will be added to your index. You must then add file types to that directory before you can search for applications within it. See *Adding File Types* below.

Adding File Types

- Follow steps 1 to 3 in *Adding Directories* on page 1.
- Under the *Directories* list, select the directory that you want to add files to
- Under the *File Types* list, click the text box and type the file name extension preceded by an asterisk and a period. If you are unsure of the file types that are contained in that directory, type *.* to add all files.
- Press the  button below the text box.
- Click **Rescan Catalog**.
- Click **OK**. Launchy will generate an index that includes your selected file types. To add more file types, repeat steps 1 to 5.

Configuring Launchy

- Follow steps 1 to 3 in *Adding Directories* on page 1.
- Click the **General** tab if it is not already selected by default and do the following to configure basic features of Launchy:

To	Do This
Enable auto-hide	Select the Hide Launchy when it loses focus check box.
Disable auto-hide	Select the Always Display Launchy window check box.
Condense search results	Select the Condense suggestion list check box.
Center Launchy	Select the Always center Launchy check box.
Change hotkeys	Click  and/or  and select a different key from the list. Your current selection will replace the default of ALT + SPACEBAR .
Check for updates on start up	Select the Check for updates on startup check box.
Set the maximum number of search results.	In the Max. number of alternate suggestions text box, type the maximum number of search results that you want displayed.

3. Click **OK** to apply your changes.

Closing Launchy

Press **ALT + F4**. Launchy shuts down. To re-launch the application, select Launchy from the Start menu and press **ALT + SPACEBAR**.